



Integrated Voice and Data Solution for any Organization

The benefit of IP telephony service is clear. For a Small and Mid-size Enterprise (SME), it is particularly attractive, since such service contributes directly to the reduction of operation cost and improvement of productivity.

- **Lower Operation Cost:** IP telephony service is less costly for a service provider since it is mainly based on software running on a server. It also allows more competitive pricing and has lower market-entry costs. Such cost saving often leads to less operation cost for end users. In addition, for an Enterprise user, Education entity or Government organization, IP telephony is cheaper, sometime even free, for international voice calls and calls between branch offices.
- **Better Support for Remote Communications:** The nature of the converged voice and data networks makes it easier for companies/organization to offer corporate network functionality to remote workers and easier for communications between branch offices.
- **Easier to Manage:** Converged voice and data services also require less equipment and overall it is easier to manage.

Many organizations now are considering to implement IP telephony technology due to its obvious advantages. However, to most of them, the process and steps involved in such implementation are still daunting. What is the right technology to choose? Do we have the right infrastructure to support IP telephony applications? Can the equipment we purchased interact truly with other vendors' equipments? Would the results be as good as the existing telephone system? The list goes on and on For a Small and Mid-size Enterprise (SME), such a dilemma is probably even more severe due to constraints on budget and resources.

CP Application Note: CP_AP_0002
Integrated Voice and Data Service for any Organization

At CyberPath, we provide an integrated solution which alleviates all these concerns. Together with our partner(s), we provide a turnkey solution which enables SMEs to have converged voice and data capability. As illustrated in Figure 1, CyberPath ESS-F10 (24 FE ports plus 2 gigabit, a managed layer 2 switch, ESS_F100 (24 FE ports plus 4 gigabit ports, a secured Layer 2 and Layer 3 Ethernet switch) or ESS_F1000 (16 gigabit ports, a secured Layer 2 and Layer 3 Ethernet switch) Ethernet switches can support such functions. With an optional card, it can also provide Firewall/VPN functions. With VoIP phone(s) offered by CyberPath partner(s), CyberPath enables an organization to have converged voice and data capability. Such a turnkey solution has been tested in a network infrastructure for interoperability and compliance. For an end user, it means a simple plug and play!

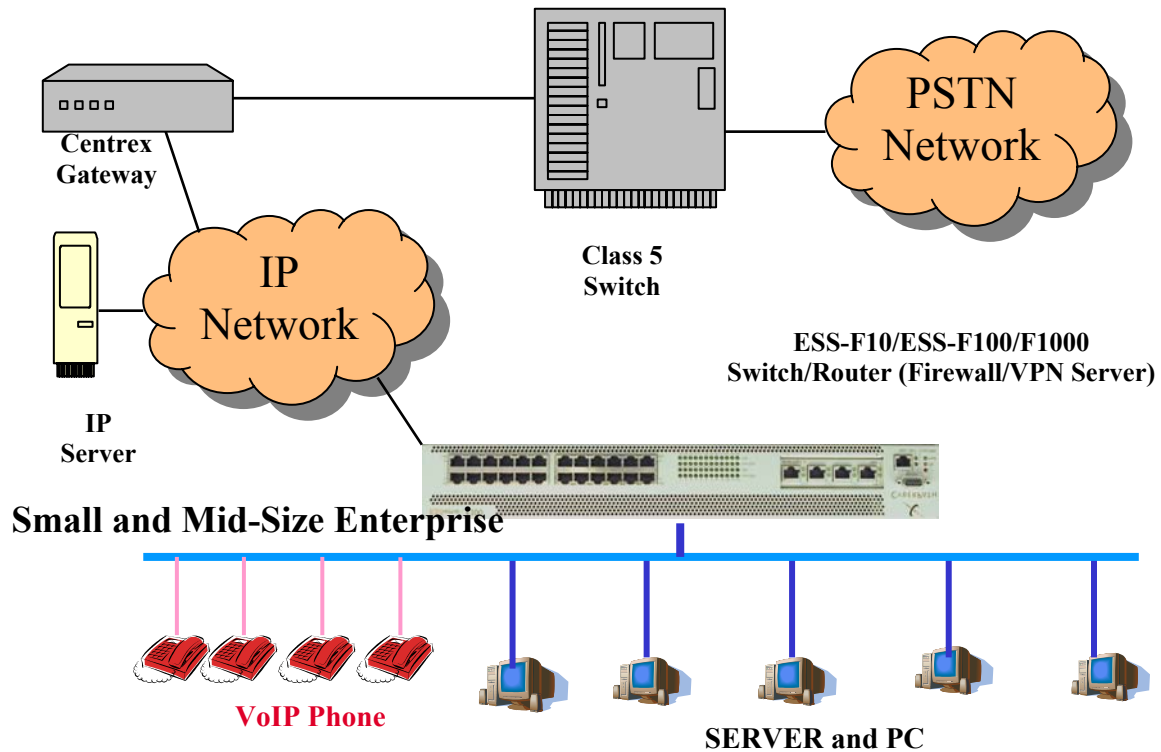


Figure 1: Converged Voice (via VoIP phones) and Data Services

In addition, as illustrated in Figure 2, CyberPath ESS switch can also include an add-on VoIP card to facilitate Plain Old Phone Service (POTS) to provide voice service over an IP network.

CP Application Note: CP_AP_0002
Integrated Voice and Data Service for any Organization

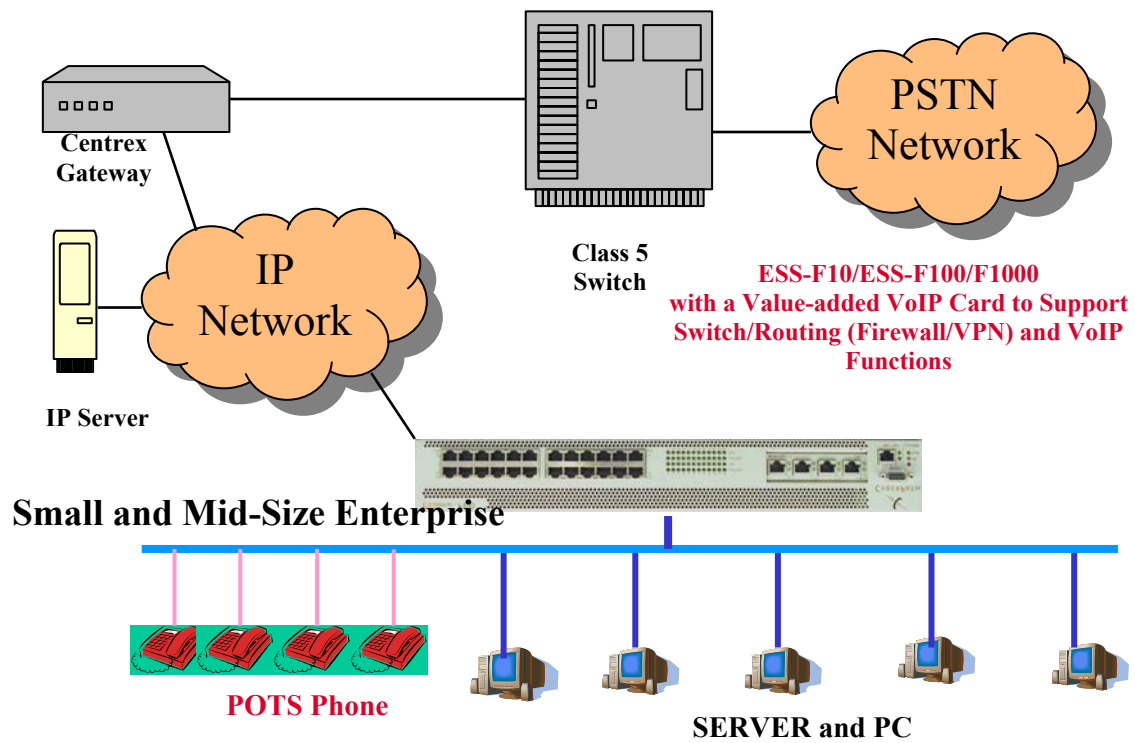


Figure 2: Converged Voice (via POTS phones) and Data Services

For more information, please refer to CyberPath WEB site: www.cyberpathinc.com.